



Rolta Basic Image Process (RBIP)

Version 10.0

Rolta Basic Image Processing is a complete solution for desktop image processing and analysis. It is easy-to-use solution for display and manipulation of gray scale and multispectral raster images and maps. Basic Image Processing provides a full set of commands to import, display, warp, and enhance raster imagery - typically generated by scanning existing photographs or hardcopy maps / drawings. It offers the basic tools for image mapping, visualization, geo-correction, re-projection, image analysis.

Key Features

Image Mosaicking

- Tools for Mosaicking with seam definition and blending
- Image collage
- Density slicing
- Feathering

Vector

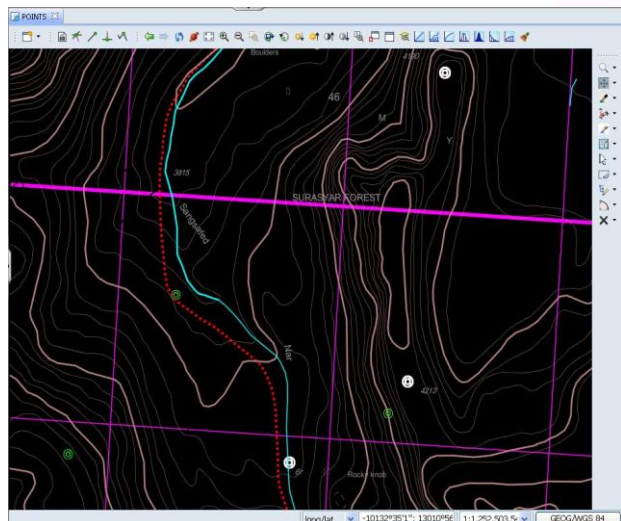
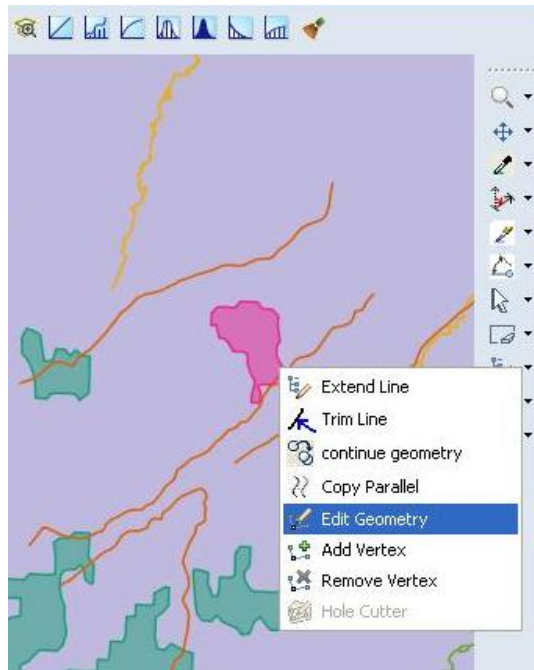
- Dedicated vector toolbar
- Advanced vector editing tools
- Geocode coordinates
- Schema update
- Set map projection from the layer

DVD/DGN

- Display DVD and DGN support
- DSF utility

Image Re-sampling

- Image-to-map registration
- Image-to-image registration
- Re-sampling using nearest neighbour, bilinear, or cubic convolution techniques



ROLTA

View Controls

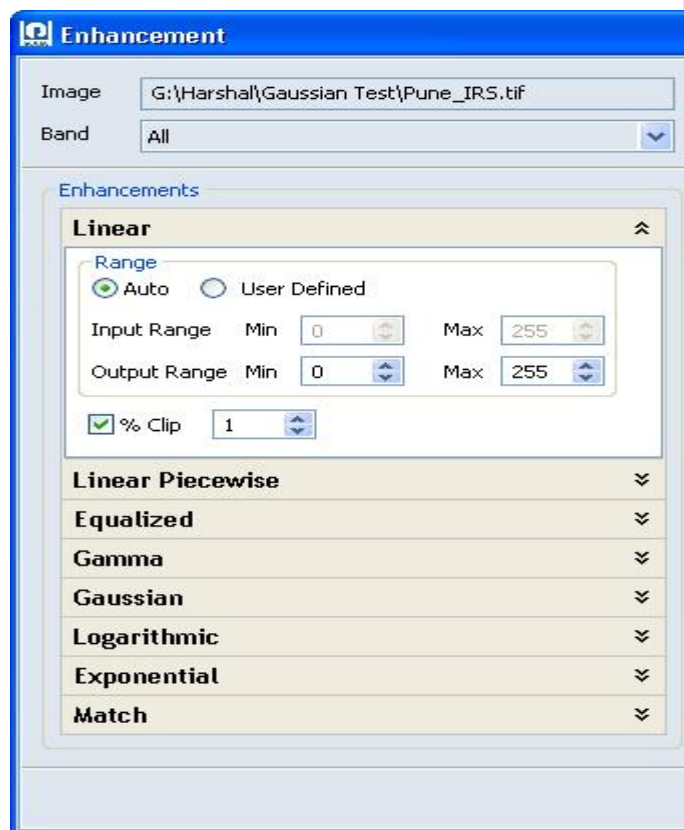
- Image Tracking
- Pixel Zoom
- Split Screen
- Flicker and Swipe

Image Enhancement

- Common image enhancement methods
- On the fly auto image enhancement and preview

Image Translation

- Import and export to all industry standard image formats
- Direct access to any raster data formats without conversion
- Image translation, skew and scaling on-the-fly
- Image rotation, flip, mirror
- Opening many images simultaneously



Benefits

- Accommodates all major Imagery Formats
- User-friendly file manipulation tool for intuitive browsing and product selection
- All-in-one package with easy-to-use interface
- User friendly GUI
- Ability to set preferences
- Real-time display of geographic coordinates
- Pixel & LUT value display in real-time
- Manual geo-referencing ability for any raster data
- On the fly preview for image filtering and enhancement
- Wide range of image enhancement options applicable on-the-fly
- Image mosaicking with automatic colour balancing
- Large image handling



ROLTA